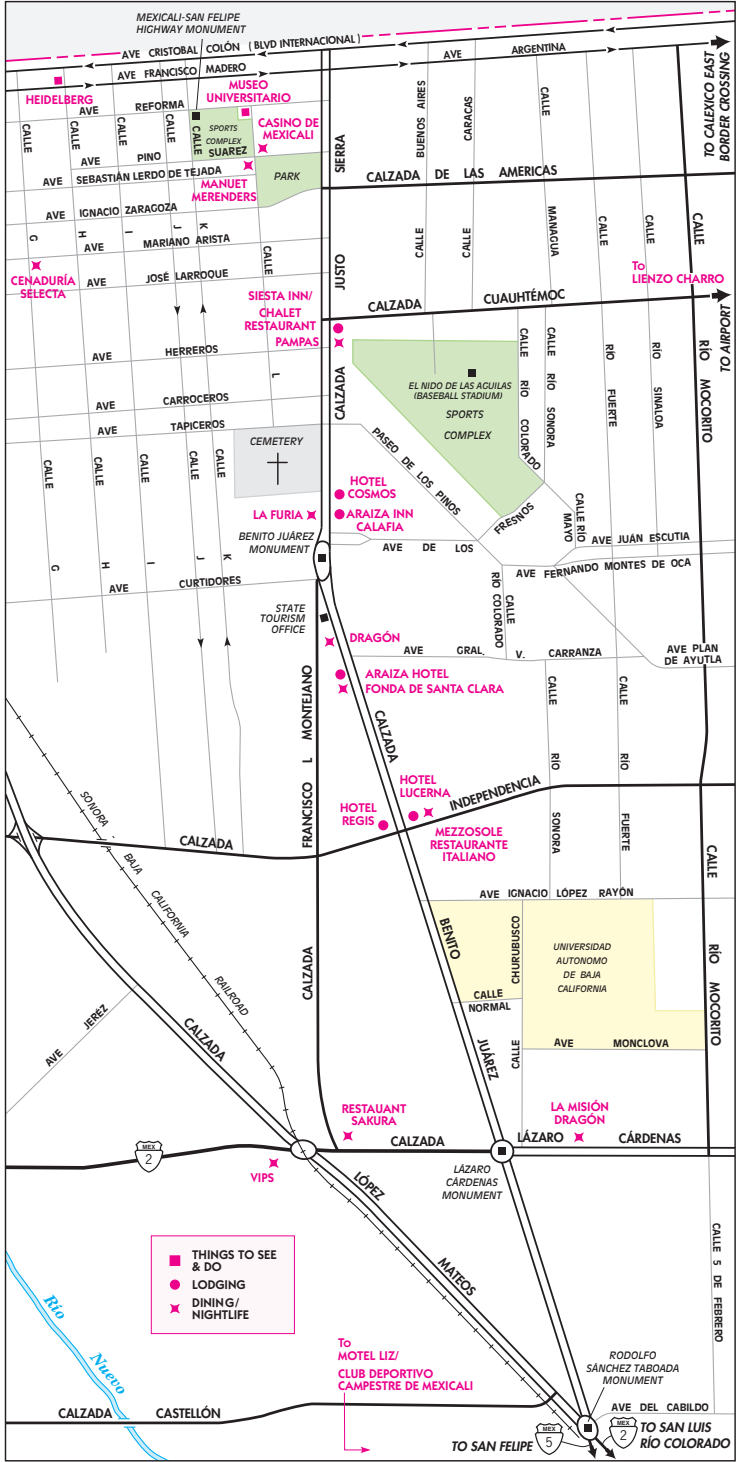
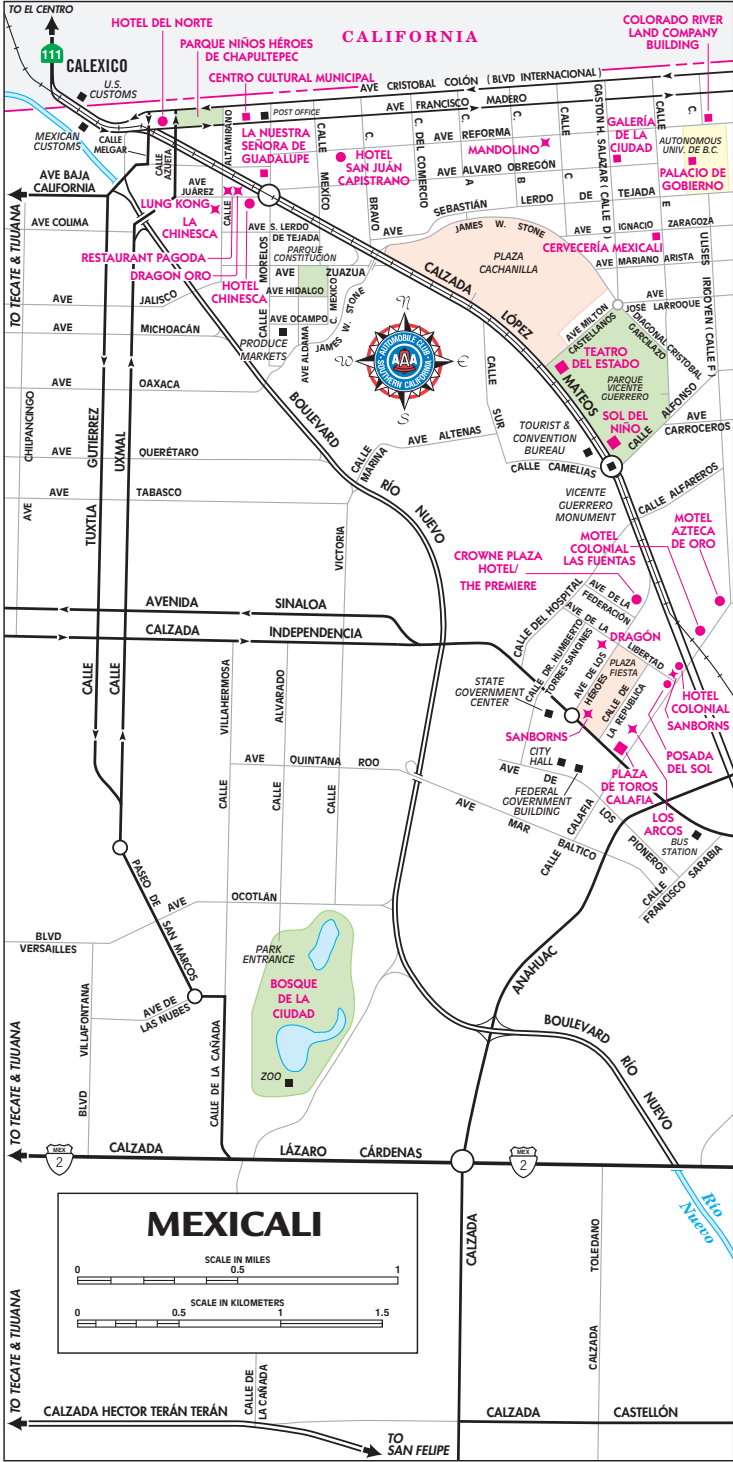


MEXICALI

Baja California

8/04



Population: 800,000

Mexicali is located on the U.S. Border across from Calexico, Calif., about 120 miles east of San Diego.

A major agricultural center, the city is located amid one of Mexico's largest winter farming districts, nurtured by waters from the nearby Colorado River. Manufacturing is another mainstay, with dozens of multinational firms operating here. Government also figures prominently, as Mexicali is capital of the state of Baja California.

Despite its border-town status, Mexicali is not a major tourist destination due to its remoteness from any large U.S. cities. However, several interesting monuments, spacious parks and other attractions beckon interested visitors though.